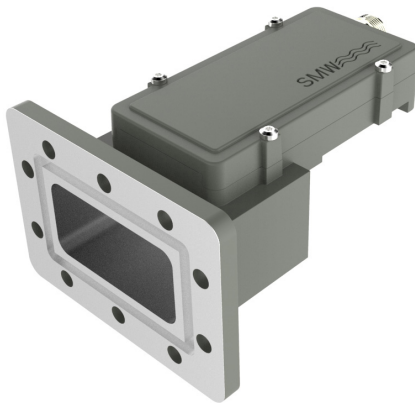


# C LNB 3.40-4.80 GHz 2 Band

## Key features

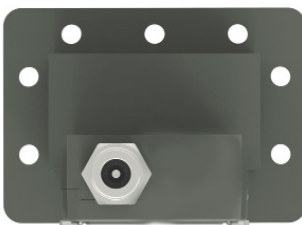


- Internal filters
- Covers full C-band in two sub-bands
- Low phase noise to meet DVB-S2X VSAT profile
- High P1dB and IP 3
- Choose between Internal Reference or External 10 MHz reference models
- Wide operating temperature range

### Description

Swedish Microwaves 2-Band C-Band switchable LNB has a unique design with integrated filters providing isolation from interfering signals like 5G & WiMAX. The low phase noise is compliant to DVB-S2X standard.

#### Standard connector

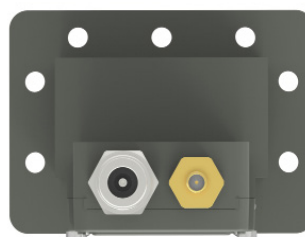


A

#### Connector A (standard)

Type: N-female (option F or SMA female)  
Functions: L-Band out, DC in, 10 MHz ref. input

#### Optional connector



B

#### Connector B (optional)

Type: SMA female only  
Functions: DC input or 10 MHz ref. input



Explore our full product range in this category



# C LNB 3.40-4.80 GHz 2 Band

## Technical specifications

INPUT	Model/LO	5.15 / 5.75 GHz
	Input frequencies	Band 1: 3.400-4.200 GHz, Band 2: 4.200-4.800 GHz
	IF Output	Band 1: 1750-950 MHz, Band 2: 1550-950 MHz
	Band switching	13/18 V
	Input WG	Waveguide WR229 / R40, CPR 229G flange
	Input VSWR	2.3:1 typ.
	Input max power	0 dBm instantaneous (not continuous)
	DC Input	+12 to +18 V, 430 mA typ. Supplied through output connector.
	LO Leakage	-60 dBm @ waveguide input
	INTERNAL	Gain
Gain variation over 24h		±0.1 dB @ 23°C
Noise figure		0.69 dB / 50 K typ.
MODELS with Internal reference		±0.5 ppm -20 to +70°C (±1 ppm -40 to +80°C), ±1 ppm -20 to +70°C (±1.5 ppm -40 to +80°C)
MODELS with External reference		Sine Wave, Level: -15 to +5 dBm. Supplied through output connector (with no ext. 10 MHz ref. present LO shifts -20 ppm).
Phase Noise		-70dBc/Hz • 100 Hz -80dBc/Hz • 1 kHz -83dBc/Hz • 10 kHz -95dBc/Hz • 100kHz -120dBc/Hz • ≥1 MHz (typ.)
Group Delay		± 1ns max.
OUTPUT	Image Rejection	40 dB min.
	Output P1dB	+15 dBm typ.
	Output IP3	+25 dBm typ.
	Output VSWR	2.1:1 typ.
GENERAL	Output Connector	F-type 75Ω, N-type 50Ω or SMA-type 50Ω
	Temperature range	Storage and operating: -40 to +80°C
	MTBF	MTBF as per MIL-HDBK-217F Notice 2: Environmental Condition GF (Ground Fixed): >489000 hours, Environmental Condition A1C (Airborne, Inhabited, Cargo): >245000 hours, Quality level: Commercial, Temp used for MTBF calculation: +35 C Ambient
	Dimensions	142 x 99 x 70 mm (F- & SMA-connector), 148 x 99 x 70 mm (N-connector), for drawing, see <a href="http://www.smw.se">www.smw.se</a>
	Weight	380 g (F- & SMA-connector) 396 g (N-connector)
OPTIONS	Miscellaneous	Enclosed conductive O-ring, mounting screws M6 x 25, washers and nuts 10 pcs.
		- Separate SMA connector for DC input and/or Ext. 10 MHz ref.

# C LNB 3.40-4.80 GHz 2 Band

## Technical Drawing

