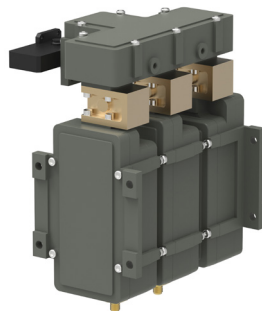
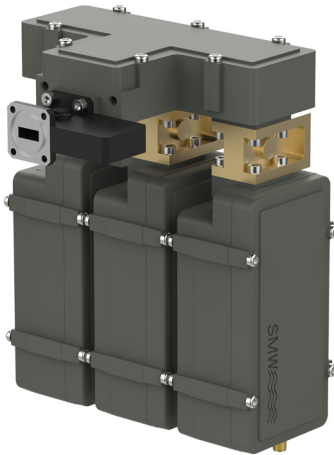


## Integrated Triple PLL System

Receives three Ka-Bands simultaneously

**NEW!**



Optional enclosure fixing points



The Ka-Band triple Systems consists of Ka LNA Wideband with Low Loss Waveguide Isolator, and Ka BDC's with Waveguide Isolators. Comes standard with Low Phase Noise to meet DVB-S2X Professional services.

Options include customized LO, customized frequency ranges, customized gain, separate DC power input and separate input for the external 10 MHz reference.

### Features

- Wide frequency range
- Choose between Internal Ref. or External Ref. input models
- Standard Ultra Low Phase Noise meets all profiles of DVB-S2X
- High P1dB and IP3
- Wide operating temperature range
- Convenient fixing holes in multiple locations  
See drawing for details

### TECHNICAL SPECIFICATIONS

MODEL:	Triple System 17.70 - 21.30 GHz		
Input Frequency	17.70 - 18.90 GHz	18.90 - 20.10 GHz	20.10 - 21.30 GHz
LO Frequency	16.75 GHz	17.95 GHz	19.15 GHz
Output Frequency	950 - 2150 MHz	950 - 2150 MHz	950 - 2150 MHz
Gain	63 dB typ.		
Flatness	±0.4 dB max. within 30 MHz, ±2 dB max. over each band		
Noise Figure / Noise Temperature	max. 1.8 dB / 149 K @ 25° C		
Phase Noise	-65 dBc @ 100 Hz -85 dBc @ 1 kHz -90 dBc @ 10 kHz -95 dBc @ 100 kHz -112 dBc @ >1 MHz typ.		
Image Rejection	30 dB min.		
Output P1dB	+15 dBm typ.		
Output IP3	+25 dBm typ.		
Output VSWR	2.0:1 typ.		
Output Connector	N- or SMA-type 50Ω		
Max. Input Level	0 dBm without damage		
Input LNA & BDC	Waveguide WR 42 / R 220. Flange PBR 220.		
Input VSWR	1.15:1 typ. with Low Loss Isolator (included)		
LO Leakage	-60 dBm @ RF input		
In-Band spurious	< -60 dBc @ Pout = 0 dBm		
MODELS with Internal Reference	±1 ppm -40 to +60°C (±1.5 ppm -40 to +80°C) / ±2.5 ppm -40 to +60°C (±3.5 ppm -40 to +80°C)		
MODELS with External 10 MHz Reference	Sine Wave, Level: -15 to +5 dBm. Supplied through output connector (with no ext. 10 MHz ref. present LO shifts -20 ppm)		
DC Input each BDC	+15 to +24 V Supplied through output connector		
Power BDC	5 W typ.		
DC Input LNA	+15 to +24 V / 110 mA typ. Supplied through separate SMA connector (bottom side)		
Current drain LNA	110 mA typ.		
Dimensions	110 x 133 x 171 mm (SMA connectors)		
Weight	1450 g (SMA connectors)		
Temperature range	-40 to +80°C		
<b>See the RF over Fiber and L-Band sections for output options</b>			

Rev.01-20-1H

Specifications are subject to change without notice. General terms Orgalime S 2012. Products from Swedish Microwave AB are made for commercial use.